

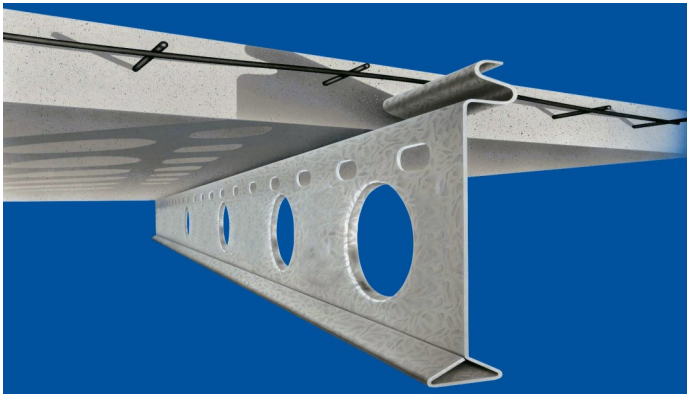
SPEEDFLOOR

FASTER

LIGHTER

EASIER

Range of products available from Speedfloor



Suspended Concrete Floor

Speedfloor is a suspended concrete flooring system using a rollformed steel joist as an integral part of the final concrete and steel composite floor. The system has been developed combining modern techniques and rollforming technology for a fast, lightweight, concrete/steel composite floor at a cost effective price. The joist is manufactured from pre-galvanized high tensile steel in a one pass rollformer, where it is roll-formed, punched, pressed and slotted to a high degree of accuracy at a fast production rate. The ends are simply bolted to the joist which are then ready for shipping to site.



Steel Joist System

The Speedfloor steel joist system is an engineered floor solution providing exceptional performance and construction efficiency. The system consists of cold formed, galvanized c-sections incorporating a unique 'tab' connection in the perimeter channel with an option for pre punched service holes in the joist sections. The Speedfloor joist system is fully engineered and offer span tables that make council approvals uncomplicated. Specifications for both Fire and Noise ratings are also available.



Transportable Concrete Floor

The Speedfloor Transportable Concrete Floor involves the unique combination of cold rolled steel sections and concrete to form a transportable concrete floor. The galvanized steel sections are manufactured using the rollforming process for dimensional accuracy where they are punched, pressed and cut to length. The sections are simply assembled and placed upside-down on a flat surface over selected reinforcement mesh. The concrete is poured into the base and leveled to form a consistent thickness. After the initial cure the floor is lifted from the flat bed, flipped and is ready for the building frame to be attached.

SPEEDFLOOR

Telephone: +61 410 442744

Email: info@speedfloor.com.au

PO Box 240 FYSHWICK, ACT, Australia 2609

www.speedfloor.com.au